

# 2013 – AN OUTSTANDING YEAR FOR ROUSSILLON

CIVR, THE OFFICIAL TRADE ASSOCIATION FOR WINES OF ROUSSILLON, ANTICIPATES A PROMISING VINTAGE FOR THE REGION'S PRODUCERS

“The quality of the first white and rosé wines is excellent. They show surprising aromatic potential and balance of freshness, as well as a balance, which plays on the vivacity of the fruit. The first red vintages also look particularly promising, and already show remarkable concentration of flavor”, states Eric Aracil, Export Manager at CIVR.

France's very first harvest began in mid-August in Roussillon's muscat à petits grains vineyards. The start of the harvest was timed perfectly, to ensure that the grapes were picked at the exact moment when they showed the perfect balance of structure and expression of fruit; bringing out the vivacity of the grape and creating dry white wines. The result of this first picking has given promising insight into the quality of the 2013 vintage; the exceptionally healthy state of the grapes this harvest, which lasted until late October, offered a favorable prediction for the excellence of the harvest. Between cool nights and hot days, the alternating north wind proved a valuable ally in producing quality grapes.



2013

## A RICH, AROMATIC PROFILE

Time and again, quality can be defined from the beginning. For the 2013 vintage, the flowering of the vine took place between June 6th and 11th. After the cooling effect of several rainstorms from the beginning of July, the heat of the succeeding months enabled a stunning progression of maturity.

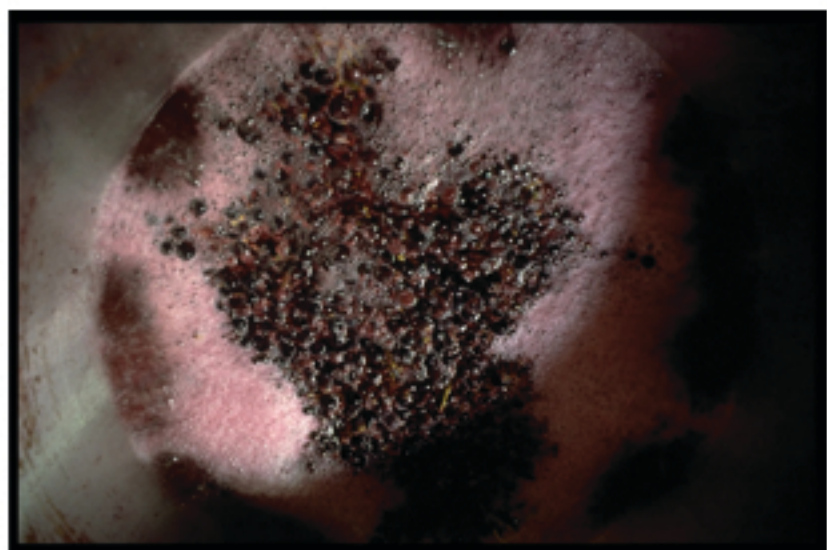
The storms at the end of September, followed by the saving Tramontane wind, gave a necessary concentration to Grenache, Syrah, Carignan and Mourvèdre for the vinification of the red wines.



2013

## ROUSSILLON, AN EXCEPTIONAL VINEYARD

Spared by a climate less unpredictable than across the rest of France, and despite a late start to flowering, the balance load in proportion to the leaves was very favorable. Arriving at just the right moment, the Tramontane wind prevented the development of disease by creating more "cool and drying" conditions. The milder conditions in late September and early October favored the Vin Doux Naturel harvest, with the expectation of some lovely wines.



2013

## A VINTAGE WITH CHARACTER

Although the time and duration of the harvest differs, 2013 is very similar to previous vintages. The profile of the harvest shows excellent quality with a yield similar to 2012. The Roussillon vineyards' location in the South of France gives these wines an exceptional concentration. In conclusion, there's no doubt about the balance and aromatic richness of the 2013 vintage, which will be enhanced by the expertise of Roussillon's winemakers.

### For Press Inquiries Contact:

Marie Christina Batich  
marie-christina.batich@sopexa.com  
Tel: 212.386.7416  
Sopexa USA  
250 Hudson St, Suite 703  
New York, NY 10013  
www.sopexa-usa.com



This is a solicitation.

Sopexa USA - 250 Hudson St - Suite 703 - New York, NY – 10013

Please send us an email at [unsubscribe.usa@sopexa.com](mailto:unsubscribe.usa@sopexa.com) should you wish to unsubscribe.